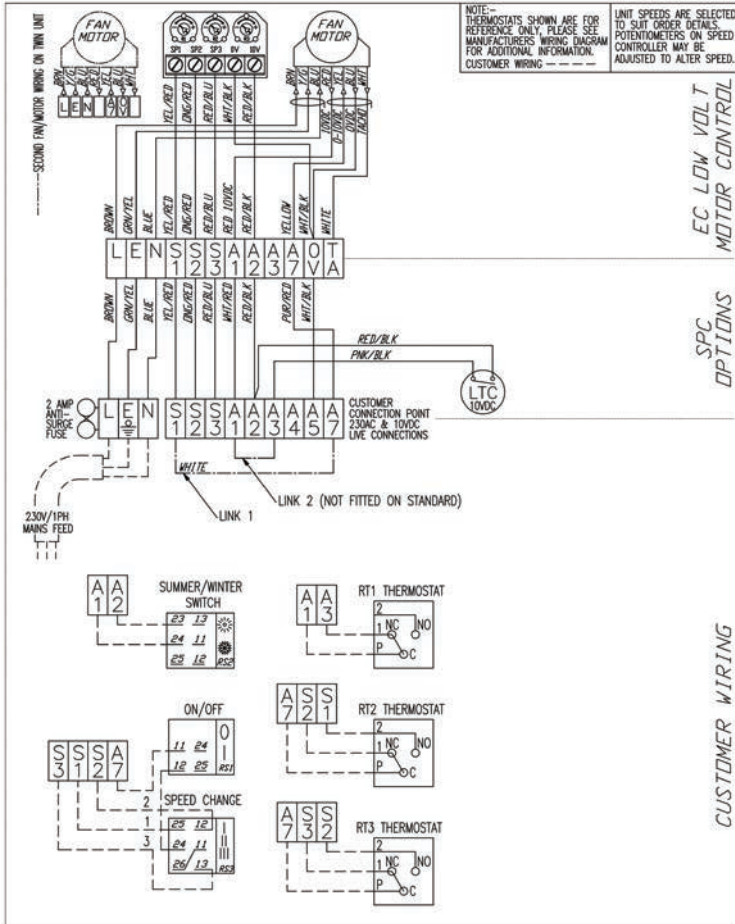


Wiring Diagram



Notes:

- Standard CT supplied wired for LTC+RT1 so link 2 is removed
- Drawing pictured is suitable for the following options:
 - LTC (add link 2)
 - LTC+RT1 (standard)
 - LTC+RT1+RT2 (remove link 1)
 - LTC+RT1+RT3 (remove link 1)
 - LTC+RT2 (remove link 1 add link 2)
 - LTC+RT3 (remove link 1 add link 2)
 - LTC+SUMMER/WINTER (add link 2)
 - LTC+RT1+SUMMER/WINTER
 - LTC+SUMMER/WINTER+ON/OFF CS (remove link 1 add link 2)

- LTC+RT1+SUMMER/WINTER+ON/OFF CS (remove link 1)
 - LTC+ON/OFF CS (remove link 1 add link 2)
 - LTC+RT1+ON/OFF CS (remove link 2)
- BMS direct control is also available via a 0-10VDC control signal on A5 (0V) and A7 (0-10VDC) from a BMS, all links must be removed.
 - Any other options require a bespoke wiring diagram.
 - Solid wire + GRN/YEL colours are 230VAC. Twin colours and links are 10VDC.